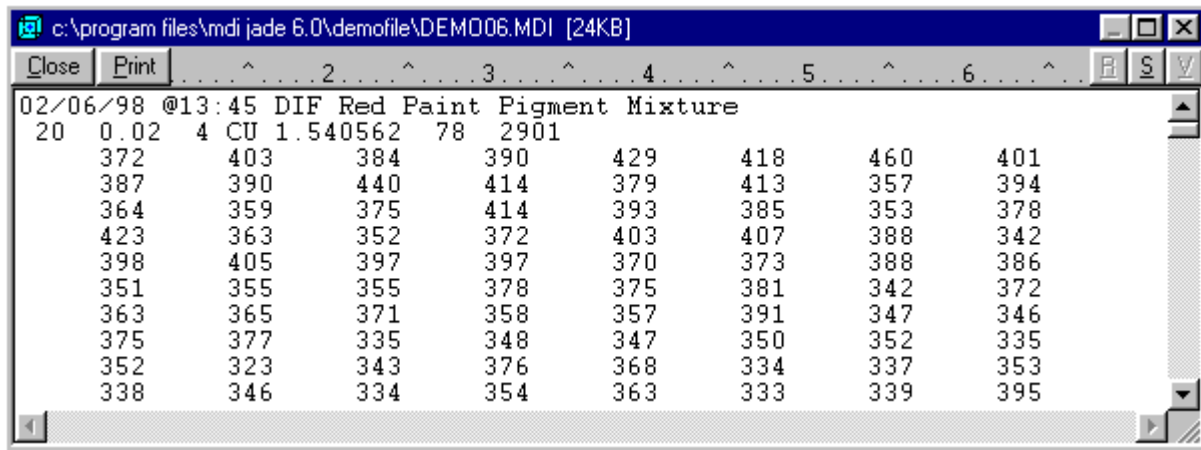
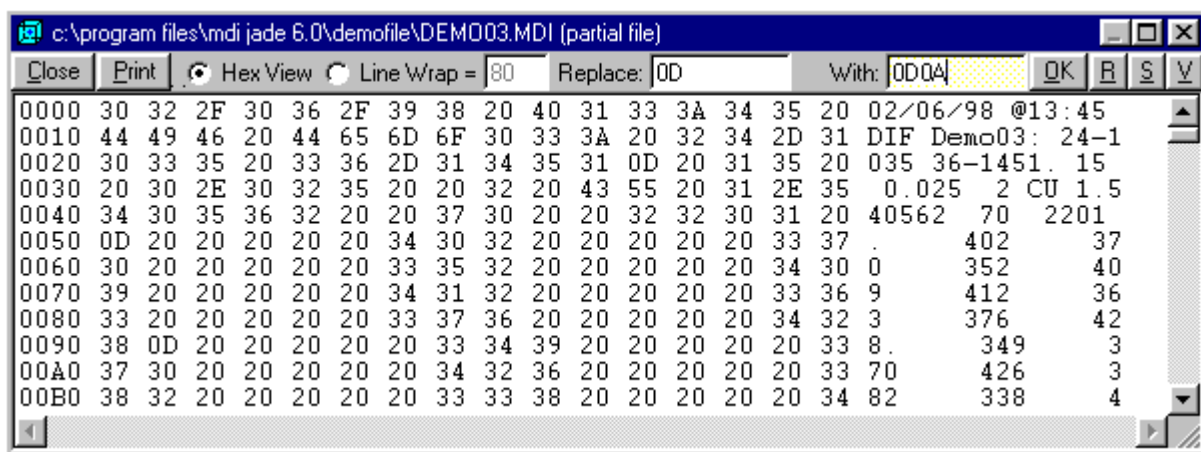


## Jade's Generic File Browser

Jade provides a generic file browser which can be used to view, edit, or print any Ascii (plain text) or binary file as well as all the report files created by Jade. You can bring up this browser with the 'Browse' button on [read pattern files](#) dialog or from the 'View | Reports & Files | Browse Report File...' menu. An example is shown below:



You can edit an Ascii file if it has less than 32K bytes of text, and Jade will prompt you to save it upon closing the browser. For a binary file, it will be browsed in the hexadecimal view, for example:



You can't edit the data manually on this view but you can replace some characters in hexadecimal forms throughout the file if the file size is less than 10 MB even when partial file is being shown. The 'R' button shows and hides the substitution toolbar. In the above example, every carriage-return (CR) character (0D in hex) is replaced by a pair of the carriage-return plus line-feed (LF) characters (0D0A in hex). If you have done any replacement, Jade will prompt you to save the data upon closing. If you click in the hex view, Jade displays the data values at the byte location in the current file as byte(C), short(I) & long(L) integers, single(S) & double(D) decimals, for example:

```
@44> C=13, I=2573, L=824183309, S=2.328878E-09, D=6.96326137222455E-77
Close Print Hex View Line Wrap = 80 Case Sensitive (String to Find) N R S V
0000 30 32 2F 30 36 2F 39 38 20 40 31 33 3A 34 35 20 02/06/98 @13:45
0010 44 49 46 20 44 65 6D 6F 30 33 3A 20 32 34 2D 31 DIF Demo03: 24-1
0020 30 33 35 20 33 36 2D 31 34 35 31 DD 20 31 35 20 035 36-1451. 15
0030 20 30 2E 30 32 35 20 20 32 20 43 55 20 31 2E 35 0.025 2 CU 1.5
0040 34 30 35 36 32 20 20 37 30 20 20 32 32 30 31 20 40562 70 2201
0050 0D 20 20 20 20 20 34 30 32 20 20 20 20 20 33 37 . 402 37
0060 30 20 20 20 20 20 33 35 32 20 20 20 20 20 34 30 0 352 40
0070 39 20 20 20 20 20 34 31 32 20 20 20 20 20 33 36 9 412 36
0080 33 20 20 20 20 20 33 37 36 20 20 20 20 20 34 32 3 376 42
0090 38 0D 20 20 20 20 20 33 34 39 20 20 20 20 20 33 8. 349 3
00A0 37 30 20 20 20 20 20 34 32 36 20 20 20 20 20 33 70 426 3
00B0 38 32 20 20 20 20 20 33 33 38 20 20 20 20 20 34 82 338 4
```

The scroll view can display about 32K text at once. If you have a large file to browse, you can jump to the end of file with the 'V' button on top of the scroll bar, and press Ctrl+PageUp/Down to read the next or previous 32K text from the file. For files which do not contain line break characters (CR and/or LF), you can wrap the text if you choose the 'Line Wrap' option and enter the desired line width in number of characters. You may find this option useful in browsing a large text file (such as 'pdf2.dat') which does not have line breaks. To browse such a file, you need to choose a non-MDI file type and change the file extension to '\*.dat' and uncheck the 'Show Sample(Scan) ID in Listing Files' option before you select its file folder. Trying to read a sample id from a large text file without any line break could cause your PC to hang up. You can also search the entire file for a particular string of Ascii text (space included) with the 'S' button, and press the F3 key to find the next occurrence.

You can print the file in the current view and Jade will prompt you to proceed if there are more than two pages of text to print. You can print only the first page of a large file if you hold down the Ctrl key. If you highlight more than two lines of text, Jade prints only the highlighted text. Jade uses the fixed-space font supported by the printer to print the text. You can set page orientation and margins on the Report tab of [user preferences](#) dialog. You can switch the default printer if you right-click the Print button. You can cancel a lengthy print job by pressing the Esc key.