

Jade's Dialog Windows

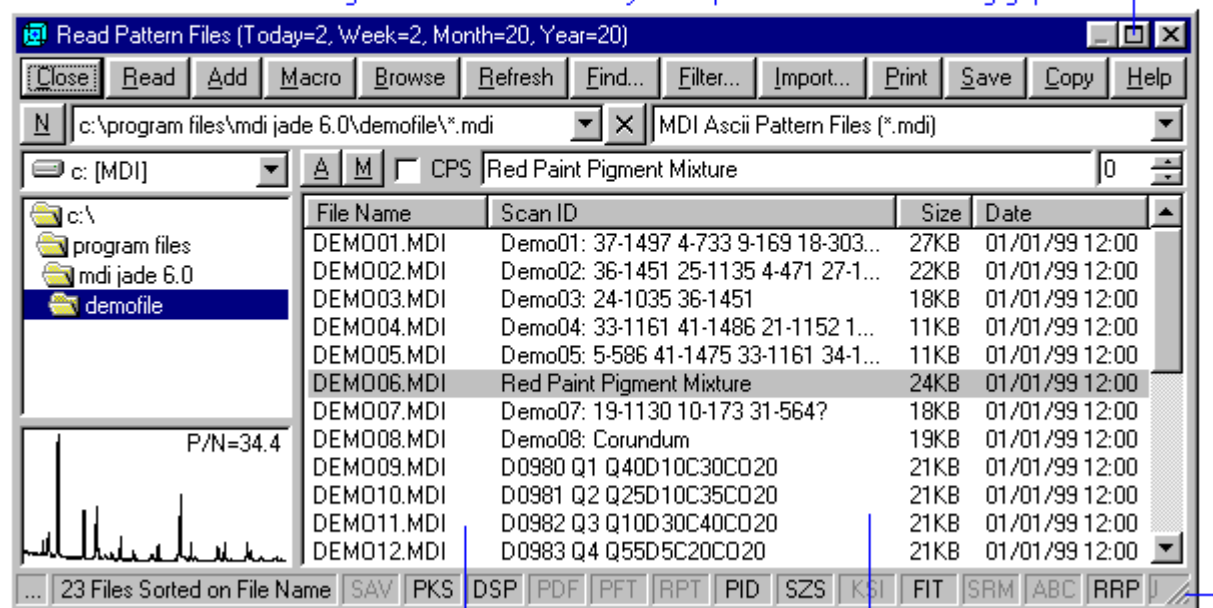
As it may have been obvious to you by now, Jade's user interface is pattern-centric and non-hierarchical in task execution. There is no predefined path for pattern processing in general. Basic pattern processing tasks can largely be accomplished with the drop-down menus and the toolbars. More advanced tasks may require working with function dialog windows that can be brought up to interact with the data in the zoom window.

There are two kinds of dialog windows in Jade with regard to their behavior: (a) modal dialog windows, and (b) modeless dialog windows. A modal dialog window requires you to close it down in order to interact with its parent window. When you click outside the frame of such a dialog window, you will hear a beep from the PC speaker telling you that the click is invalid and thus ignored. A modeless dialog window has no such restriction, behaves very much like a toolbar or toolbox, and usually has no OK and Cancel buttons to dismiss it. The word 'modeless' means that the program is not constrained into a particular mode of operation which it needs to be released from. Note that dialog windows are often called dialog boxes or just dialogs in this on-line help.

Modeless dialog window as indicated by the thumbtack icon




Resizable dialog window as indicated by the square icon and the sizing grip



List items can be sorted, column widths can be resized, and columns can be swapped

Jade implements many modeless dialogs to augment the flexibility of its user interface. You can tell one of them easily by the thumbtack icon on its title bar. An example of such a dialog window is the [background fitting](#) dialog. When you make a change on such a dialog, it is carried out immediately by Jade and new results may appear in the zoom window. You can then use the zoom & pan tools to examine the changes without having to close the dialog, and to try other changes if necessary. This immediate feedback greatly speeds up the data analysis. With experience you will find you can

accomplish everything much faster. You may also notice the  button on most modeless dialogs that are resizable (e.g. [PDF retrieval dialog](#)). This button allows you to 'roll up' the dialog with one simple click so that you can view and interact with the main window without moving or minimizing or closing the dialog window. You can 'roll down' the dialog by clicking the same button once more.

You should also realize that most of the dialog windows that show a list of items are resizable, as

indicated by the little square button at the right end of the title bar. Note that some dialogs may not display the sizing grip at the lower right corner even though they are resizable. An example is the [read pattern files](#) dialog shown above. Some dialogs allow resizing of their width or height only (i.e., one dimensional resize, see the [cell refinement](#) and [XRD simulation](#) dialogs). In general you can sort the list by clicking the desired column header, reverse the sorting by clicking the same column header again, change the widths of columns by dragging in between their headers, and even swap them by dragging their headers to the left or right. Jade will remember width changes of certain columns it deems important (such as those for file names, scan id's, phase id's). Any width changes made to the columns of numbers will not be remembered by Jade, nor will be the column order you may swap. However, Jade will utilize the current column widths in printing some lists (such as file list and PDF list) so that you have some control over how to fit the text on the printed page. You can also change the printing orientation and font of most reports on the Report tab of [user preferences](#) dialog.

Jade utilizes the title bar of dialog windows to display relevant information (such as file name of the pattern being processed for the sake of screen capture). If the caption overflows the title bar, you can change it either by resizing the dialog window if it's resizable or by changing the font type (such as using non-bold type face) or font size of the 'Active Title Bar' item on the Appearance tab of Windows desktop setting.

Tip 1: you can press the ESC key to close most of the dialog windows in Jade.

Tip 2: you can bring up context-sensitive help by pressing the F1 key on the active dialog.

Tip 3: you can copy the active dialog window to the clipboard by pressing the Alt+Print-Screen keys.

Tip 4: you can place the active dialog to another monitor using the Alt+Ctrl+Arrow keys instead of dragging if you have multiple monitors supported by your Windows. Jade will remember where to display the dialog next time you show it.

Tip 5: you can print the active dialog by pressing the Ctrl+Shift+P keys.