

Installing Jade 6

Jade 6 is a 32-bit Windows application that runs on Microsoft Windows 95/98/Me/NT4(SP4)/2000/XP OS environments. We recommend a 400 MHz or faster Win-2000 or XP PC with 128 MB memory and a 17 inch or larger monitor. A display desktop of 1024x768 pixels or more with high/true colors is also recommended to run Jade. You can run Jade on less capable systems but you will compromise performance. For example, on a smaller screen, there is the disadvantage of not seeing the full layout of its main windows. Minimum hard disk space to install Jade is around 20 MB. If you have access to ICDD PDF, FIZ ICSD, and/or NIST Crystal database, more hard disk space is required to create and store the index files after Jade is installed.

Installing the Local Hardware License Key:

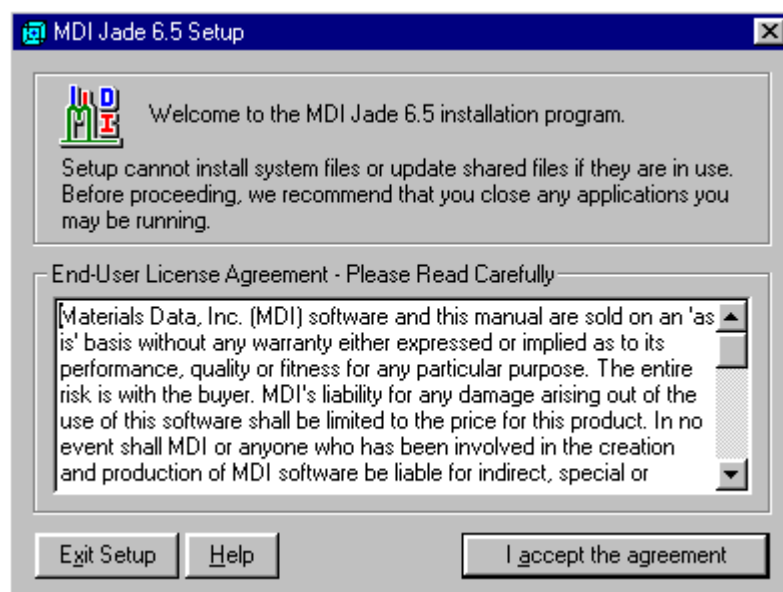
Among the materials supplied with this program is a hardware license key that activates MDI programs on your PC when it is installed properly. This hardware device is provided by MDI in either one of the following types:

- A small 25-pin adapter in beige color, which has the label 'MDI-R#####' on it. It must be installed on the parallel printer port between the computer and the printer cable before you can install and run Jade. You should turn off your computer and printer for this operation. If you have other Non-MDI keys already installed, this key can be connected as the last in the chain although you may need to experiment with the placement if the key is not recognized by Jade. This hardware key will not affect the printer port in any way and is transparent to your printing operations.
- A small USB (Universal Serial Bus) token in purple color, which has the label 'MDI-U#####' on it. You should not plug this key into the USB port before you run the installation program 'setup.exe' to be described later.

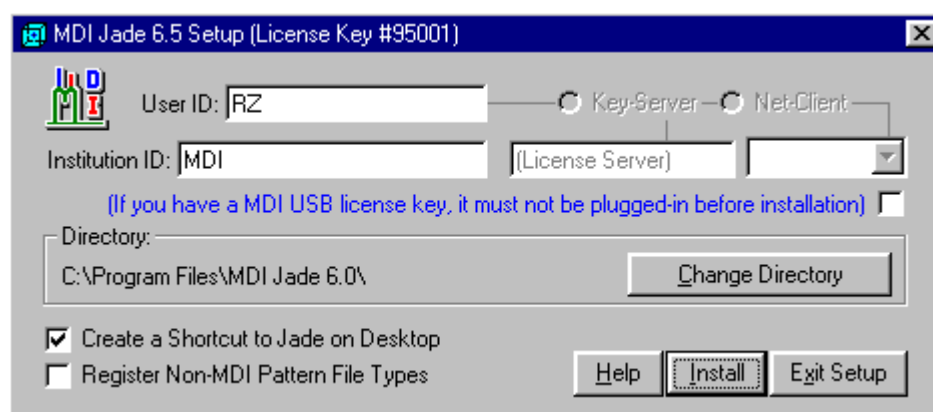
Installing Jade 6:

Before you install Jade, you should close all running applications if possible. On Win-95/98/Me, you can list all running apps by pressing the Ctrl+Alt+Del keys. On Win-XP/2000/NT4(SP4), you must log on to the administrator account to install Jade 6. Note: this installation will not interfere with earlier versions of Jade. You do not need to remove them in order to install Jade 6 on the same computer, and you can run it together with Jade 6 if desired. If you have previously installed Jade 6 on the same computer, the installer will automatically uninstall it before proceeding with a new installation.

Insert the Jade CD into the CD-ROM drive and wait for the installing program to start. If it does not start, you can start it by running the 'setup.exe' in the root folder of the CD. After a brief display of an initialization screen, the following dialog should appear:



If you accept the stated MDI license agreement, the following dialog will appear:



Please fill in the 'User ID' and the 'Institution ID'. The former should be the program licensee and the

latter will be used by Jade on all printouts and reports. You can later change both IDs from the system registry and the institution ID on [user preferences](#) dialog without reinstalling Jade. Click the 'Install' button to begin the installation process. The installer will first install the Rainbow license key driver, which enables Jade 6 to access the MDI license key. If you have multiple copies of Jade 6 with different license key numbers, make sure that the key number being installed matches that shown on the title bar of the above dialog. You may have to restart the computer in order to load the new license key driver, and the installation will resume if an automatic reboot is initiated by the installer. If you have the USB key described earlier, you can plug it into the USB port when the following message appears and then click the 'Retry' button:



Windows will detect the new USB key and configure it automatically. If the license key is still not recognized by the installer, reboot your computer and start the installation again. If the license key or server is still not found after a reboot, you should run the 'Add/Remove Programs...' applet on Windows control panel and remove all entries of 'Sentinel System Driver' from the installed list before reinstalling Jade 6.

Should you encounter any warning messages regarding file copying failure, you can ignore them only if all non-system applications have been shut down before you start the Jade installation. If you encounter a message regarding obsolete/read-only system files under Win-NT, you may have to boot into the VGA mode in order for the installation to update those files. Please call MDI for help if you are not sure what to do. If you check the 'Register Non-MDI Pattern File Types' box, files with the extensions of *.RAW, *.RD, *.SD, *.PD3, and *.CIF will be associated with the 'MDI-Jade', and be opened by Jade 6 when you browse them in the Explorer.

Creating a Shortcut Icon on Your Desktop to Run Jade:

Although you can start Jade from the 'Start | Programs | MDI Jade 6.0' menu, it's easier to do so from a Jade shortcut icon on your desktop. If the 'Create a Shortcut to Jade on Desktop' is checked, an 'MDI

Jade 6.0' icon will be placed on your desktop as well as in Windows 'Programs' folder at the end of installation. You can also create such a shortcut by locating the 'Jade6.exe' file with the Explorer under the default folder of 'C:\Program Files\MDI Jade 6.0', then dragging it from the file list and dropping it to the desktop. The additional advantage with a Jade icon on the desktop is its ability to accept XRD pattern files you may drag & drop on it from other applications (such as the Explorer or the File Finder). See [drag & drop data files](#) for more information. You may also create more Jade icons to run Jade in 'stealth mode' with the help of task macros. See [auto processing with task macros](#) for more information.

Uninstalling Jade 6:

If you need to remove Jade from your PC, you should do so using the 'Add / Remove Programs' utility from the Control Panel, rather than using the Explorer directly to delete Jade's program folder. The uninstaller will not remove the Jade 6 folder from your hard drive since there will be program setting files created after the installation. You can delete the Jade 6 folder altogether from the Explorer yourself if you do not place raw pattern files as well as report files created by Jade in this folder.

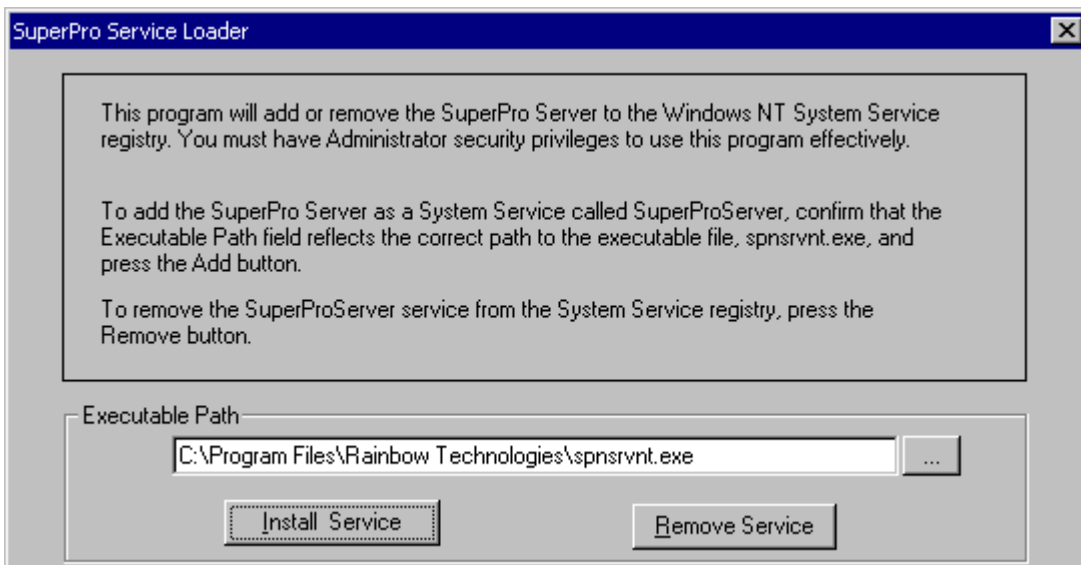
Installation of Jade 6 under Microsoft Windows Network:

If you have a network version of Jade, which enables concurrent access of limited Jade licenses over a network by a greater number of users, you should follow the steps outlined below to install it:

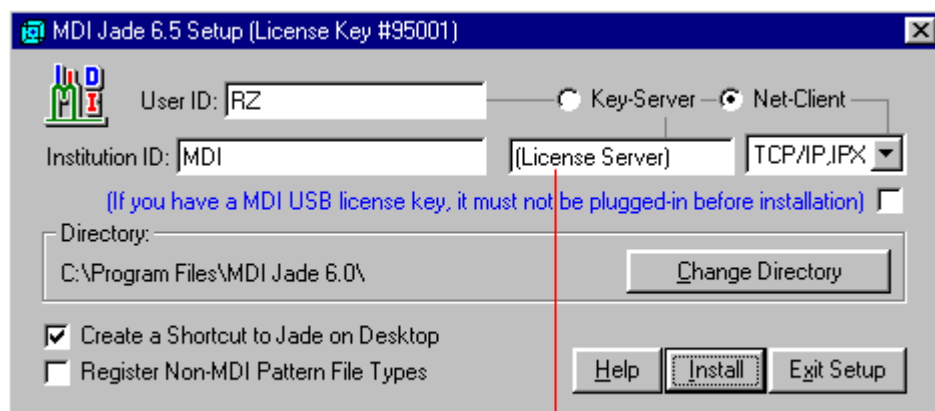
- Attach the network hardware license key to the printer port of a server PC on the local network. This installation only supports Microsoft Windows local area network with TCP/IP or IPX/SPX network protocols. This PC is the one that will run the Rainbow license server program but not necessarily the Jade program. We recommend a Win-2000 PC to service the MDI license key. This server PC must be located on the same subnet as the clients who will be running Jade 6.
- Insert the Jade 6 CD and wait for the installer to start. If the 'Key-Server' option is selected on the following dialog, the installer will install the Rainbow license key server as well as the license key driver on this server PC with the MDI license key attached.



- On Win-XP/2000/NT4(SP4), the following dialog will then appear and you must click the 'Install Service' button to install the license server as an NT service (note: you must log on to an account with administrator access for this):



- With the license server running on the server PC, you can now take the Jade 6 CD and install it on any PC on the same network (and same subnet) if the 'Net-Client' option is selected on the following dialog . The installer will contact the MDI license server over the local network to obtain the license for this installation. To speed up license access and allocation, you can provide the computer name or IP address of the license server on the installation dialog. If you do, this server name or IP address will be saved in the system registry as '**hkey_local_machine\software\mdi\license\server**'. If you later move the license server to another PC, make sure your client's registry is updated accordingly. On Win-NT, you can use an environment variable 'NSP_HOST' to set the license server for a client instead of the entry in the system registry (note: the registry entry supersedes the 'NSP_HOST' variable if both are defined). If you have a large local network, you may have to specify the server name or IP address in order for Jade to find the server before the search is timed out.



Name or IP Address of Computer Servicing the MDI License Key (Optional)

Please note that Jade cannot be installed on a server PC to be run from another PC on the network. In other words, Jade and its dependent files must reside and be registered on individual PC, but Jade can seek out the license key across the network and allocate the license as long as the license server program is running on the network. Nevertheless, you can copy the entire content of the Jade 6 CD to a shared folder so that it can be installed from another PC across the network.

- Normally an allocated license is released when Jade is closed down. To make a good use of the limited licenses, the license server will terminate an allocated license if Jade is left to idle for more than 15 minutes or crashes. If you re-activate Jade after its license has been revoked (such as by moving the mouse), Jade will try to obtain a new license from the license server if a free license is still

available. You can monitor the usage of Jade licenses by running the 'monitor.exe' program located in the 'c:\Program Files\Rainbow Technologies' folder.

- You can run Jade in dual modes, i.e. accessing both a local key and network license. By default, Jade will look for a local key first even if it's installed as a network client, and allocate a network license only when the local key is not found on a client pc. In order for Jade to find the local key, you must also install it as a key-server so that the Rainbow license server and driver are installed.

Contact MDI if you would like to know more about network licensing of Jade.