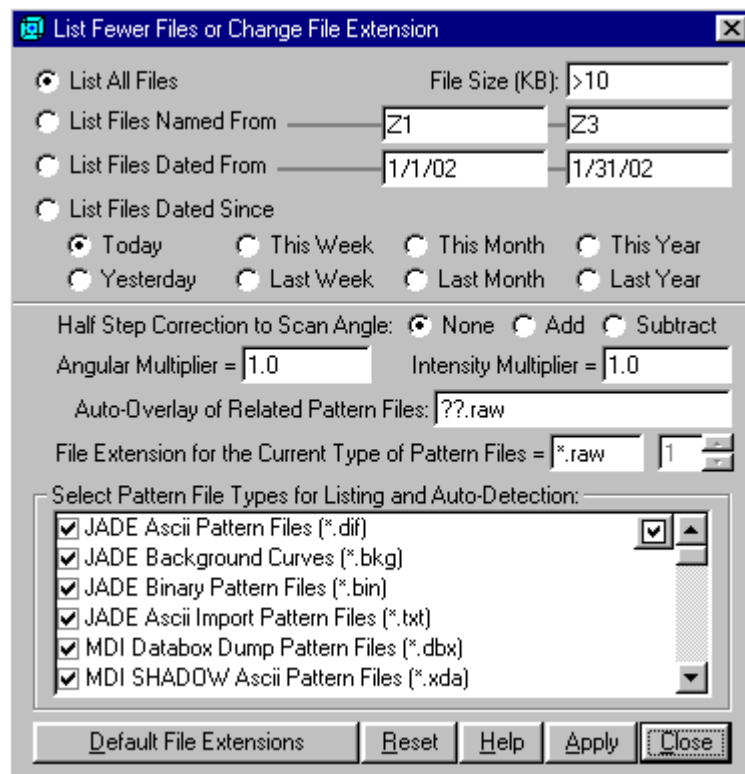


List Fewer Files with File Filters

If you have too many pattern files in one folder, you can use the file filters on the following dialog to list a subset of them, for example:



This dialog is accessible with the 'Filter...' button on [read pattern files](#) dialog. The 'File Size (KB)' box allows you to list files of certain sizes in kilobytes. You can specify the sizes in three ways: e.g., '>10' to list files greater than 10 KB, '<10' to list files less than 10 KB, and '10' or '=10' to list files ~10 KB. When using file name filters, you can specify up to 8 alphanumeric characters for the range. In the above example (range from Z1 to Z3), Jade only lists pattern files of names 'Z1...', 'Z2...', & 'Z3...'. If you are looking for a pattern file you know should be present but Jade isn't finding it, you may have inadvertently set this filter to exclude it from the file list. Jade displays an asterisk on the '*Filter...' button to tell you that some sort of file filter is being applied.

If the pattern files contain intensity data collected in continuous scan mode, the angle value assigned to a data point with a given chopper angle (i.e., stepping angle) could be the starting, the ending, or the middle angle of a step, depending upon the particular data collection program in use. For example, if you collect a continuous scan from 10 to 60 degrees with a chopper angle of 0.02, the angle value assigned to the first data point could be 10, 10.01, or 10.02 degrees. It's also possible that your data collection programs may start the scan at 9.99 rather than at 10 degrees. Since Jade does not collect data, it's up to you to find out and decide. With the 'Half Step Correction to Scan Angle' option, you can choose to add or subtract a half step-size to the starting and ending angles that are read from the pattern files.

The 'Angular Multiplier' and 'Intensity Multiplier' are provided in case your data do not come in the expected units of counts vs 2θ degrees. The intensity multiplier could also be used as a simple scaling factor, for example to correct for instrument drifting effect in data comparison. These multipliers take effect only in reading new pattern files.

'Auto-Overlay of Related Pattern Files' is useful if you want Jade to overlay a group of pattern files whenever one of them is read into Jade. People who analyze clay samples, for example, may need this kind of automation. To do this, you need to enter a file relation mask in this box and also check the option on [read pattern files](#) dialog. The best way to explain the file relation mask is to use examples:

- If the group of file names are like 'test01.raw', 'test02.raw', and 'test03.raw', etc, the mask should be entered as '???.raw', where a single '?' mark identifies a wildcard character backward from the dot '.' in the names.
- If the group of file names are like 'test.raw', 'test-a.raw', and 'test-b.raw', etc, where 'test.raw' is the primary file to read, the mask should be entered as '+*.raw' or '+???.raw', where the '+' sign tells Jade to append wildcard character(s) to the primary name in looking up the related files.
- If the group of file names are like 'test.raw', 'test.dif', and 'test.r01', etc, i.e., they all have the same name but different extensions, the mask should be entered as '*.'. Jade would then try to identify file type from the extension, and assume the same type as the primary file if the file extension does not match any known type.

You may be able to come up with other group masks as long as you keep in mind that the '?' gives you a single wildcard character while an asterisk '*' gives you more than one.

The file extension of a non-MDI file type is changeable. You should always select the correct file type before you change the file extension. If you are not sure about the extension for a file type, click the 'Default File Extensions' button, which resets it to the program default. Jade identifies a file type from its extension only when you list all file types or when you [drag and drop files](#) from the Explorer. If you are not sure about the file type, let Jade figure it out for you by dropping the pattern file into Jade from the Explorer.

You can tell Jade to hide certain types of pattern files not related to your work by unchecking them on the file type list which appears at the bottom of this dialog. When a file type is unchecked, it will not appear on the file type dropdown list on the [read pattern file dialog](#), Jade will not list the files of that type when you select 'XRD Pattern Files (*.*)' to list all pattern files, and the file type will not be tested when you drag and drop a pattern file into Jade for auto-type detection. However Jade will put the file type back if you select it again from the 'recent pattern files' list.